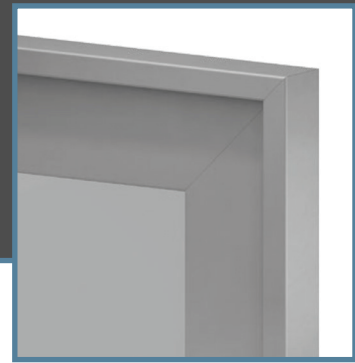


WENTWORTH

Profile Specification



The Wentworth profile is designed to make a statement, with a deeper profile and substantial form that brings weight, structure and a sense of luxury to interior furniture. Ideal for feature cabinetry, display units and statement wardrobes, it transforms doors into a defining element of the room.

Strong. Architectural. Distinctive.

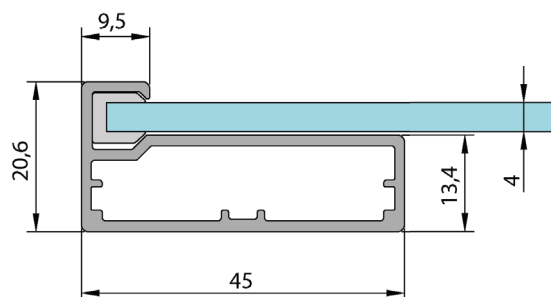
PRODUCT FEATURES

- Slimline luxury aluminium frame
- Choice of exclusive artisan, clear, mirrored and tinted glass inserts
- Suitable for kitchens, wardrobes, interior cabinetry
- Designed exclusively for the trade
- Manufactured in the UK, in exclusive collaboration with Roberto Marella



PRODUCT SPECIFICATIONS

Overall Dimensions (L*W*H):	Made to measure
Maximum Height:	3m
Profile Width:	9.5mm above glass 45mm behind
Profile Thickness:	20.6mm
Profile Material:	Extruded Aluminium
Profile Finish:	Powdercoated
Corners:	Mitred
Tolerance:	- + / 1mm
Glass:	4mm Thickness



HANDLES

Self coloured handle.
Position must be specified
at point of order.



HINGES

Profile is complete with hinges
which must be specified at
point of order.

COLOUR OPTIONS

- 1 Matt Black
- 2 Dark Bronze
- 3 Titanium

